

LEARNING MANAGEMENT

Automate your eLearning with ease.

ELMO



Keeping skills up-to-date in a fast-paced world is critical. Combine this with the need for compliance training to the mix, and the efficient management of learning can be a daunting task. ELMO Learning Management has been engineered to smooth the process by keeping track of employee training needs, course completion rates and compliance requirements.



Create a culture of learning

Build personalised learning plans for employees while curating the right professional development to close critical skills gaps.



Powerful reporting and insights

Easily keep track of employee training needs, course completion rates and compliance requirements with powerful custom reporting.



Boost employee engagement

Empower employees to develop the right skills to grow their careers, with access to over 400 courses from the ELMO Course and Video Library.

Why you'll love it

ELMO Learning Management enables you to create and curate a comprehensive catalogue of courses.

These can range from simple courses to more complex courses with multiple components, including policy acknowledgments, documents, eLearning (including SCORM content), surveys and instructor-led training.

You'll also be able to keep track of employees who require Continuing Professional Development (CPD). ELMO Learning offers a straightforward process for configuring and assigning CPD plans to these employees, enabling them to track their progress and record any additional external training they undergo.

The system also allows you to automate the allocation of training to the employees. Automated notifications ensure both employees and managers receive reminders to complete their training. Additionally, the system provides comprehensive reporting to monitor compliance requirements and help managers understand the effectiveness of training.

LEARNING MANAGEMENT





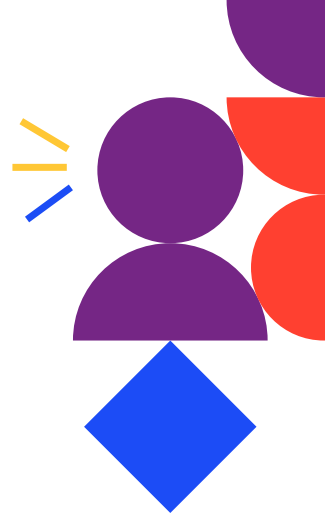
When you're talking about a sales team of over 100 people, and they have to do a certain number of hours or professional development, that's a lot of face-to-face training and manual processing of training records. ELMO has allowed us to record all of that information in one central place, reducing time away from the frontline for our employees, and enabling us all to get back to what we're here to do, which is service our members.

- Bank First



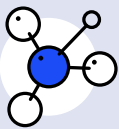
Key Features:

- ◆ Build eLearning modules
- ◆ Deploy SCORM content
- ◆ Access courses from a mobile device
- ◆ Track and report on compliance rates
- ◆ Create and manage instructor-led training
- ◆ Search and find courses in the course catalogue
- ◆ Create personalised learning plans for employees
- ◆ Create and track quick policy acknowledgements
- ◆ Access to over 400 courses from the ELMO Course Library and/or Video Library
- ◆ Comprehensive reporting for managers to track compliance training rates and overall training
- ◆ Effectiveness and overall trends
- ◆ Powerful custom reporting empowering administrators to build detailed reports based on their specific needs, including graphical reporting and scheduled email reports



WE BUILD HR SOLUTIONS THAT RELEASE YOUR FULL POTENTIAL.

Tailored to meet your needs today and tomorrow.



HR Core

Centralise and automate your people management in one place.



Learning Management

Build a culture of learning and develop your people with eLearning.



Onboarding

Start your new employee's journey with a personalised onboarding experience.



Performance Management

Empower your teams to achieve their goals and thrive.



Payroll

Navigate the complexities of pay with secure and accurate payroll.



Recruitment

Find and hire the right talent for your business.



Founded in 2002, ELMO Software is the trusted provider of cloud-based HR technology solutions to 2,500+ mid-sized organisations and over one million end users across Australia and New Zealand.

elmosoftware.com.au | elmosoftware.co.nz